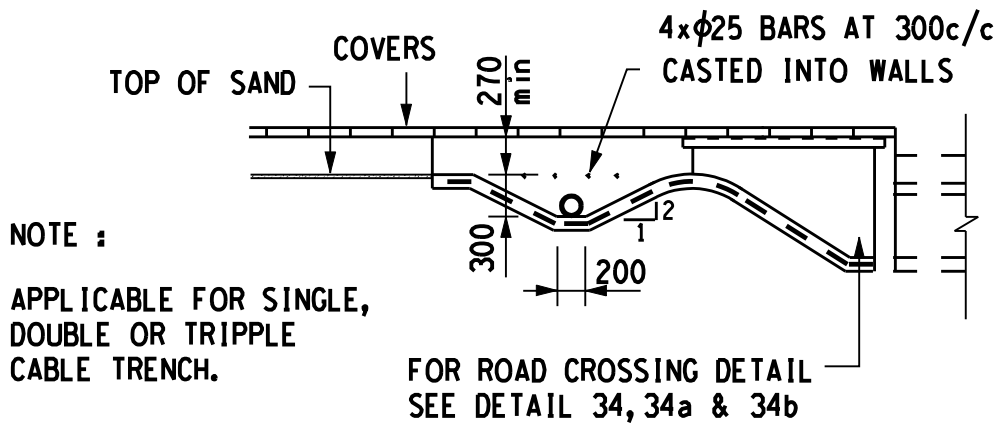


REINFORCEMENT :

DETAIL 66

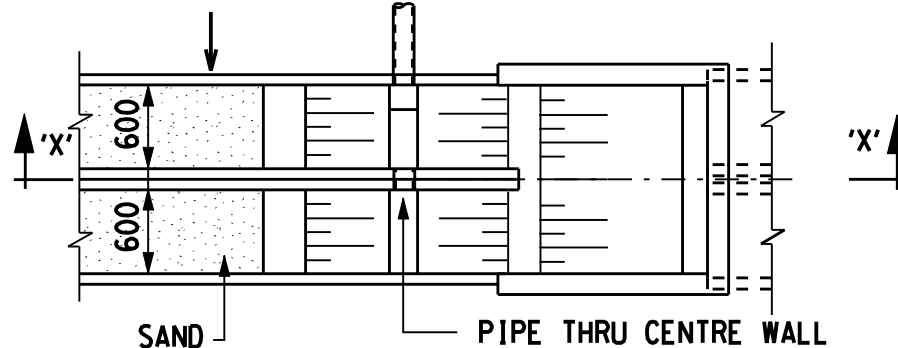
ALL WALLS & FLOORS MESH REINF.
TO METRIC FABRIC NO.245.
WALLS 150 mm THICK
FLOOR 100 mm THICK.



SECTION 'X'- 'X'

SINGLE CABLE TRENCH DTL 15
DOUBLE CABLE TRENCH DTL 16
TRIPPLE CABLE TRENCH DTL 16a

φ150 PVC PIPE TO NEAREST
STORM WATER MANHOLE



SECTIONAL PLAN

N.T.S.

CABLE TRENCH

SINGLE, DOUBLE OR TRIPPLE CABLE TRENCH CUT-OFF DRAIN

THE C.A.D. REFERENCE NUMBER IS :
MUTS0.54/00390K33.R05

TRANSMISSION
SUBSTATION
TECHNOLOGY
DEPARTMENT



ESKOM

DRAWN
GETEKEN

Z.K.F.

23/4/80

CHKD
NAGES

DB.N.

AUTH
MAS

REV

2

DATE
DATUM

H V YARD CIVIL WORK
STANDARD DETAILS

0.54/390

SHEET 66

DRG.TEK
REGISTR

A4L